

# ProSomnus® ACG System Rx



PATENTED



ENGINEERED FOR: Comfort, Simplicity,  
Biocompatibility, Durability, Predictability

Leader In Precision OAT™

Made in the USA. ProSomnus® is a registered trademark. NOTE: Please use blue or black ink when completing this form. PRO3-032-A

<b>Case Information</b>		Note: Turnaround time is 7 days + shipping. Call for a rush request. \$100 rush fee will apply.
DR. NAME	ACCOUNT#	
SIGNATURE OF DENTIST (Required)	DENTIST LICENSE# (Required)	
<small>Person signing this authorization accepts sole responsibility for payment and agrees to pay all legal and collection costs in the event of suit, including reasonable fees. Dentist's signature will authorize ProSomnus® Sleep Technologies to construct, alter or repair the device described on this requisition.</small>		
DR. ADDRESS		
DR. PHONE	DR. EMAIL	
<b>CASE DUE DATE</b> (If left blank, default to standard 7 day production turnaround + shipping)	PATIENT NAME (Please Print)	

**Splint Options**

- ProSomnus® ACG Day Splint
- ProSomnus® ACG Day Full Splint
- ProSomnus® ACG Functional Splint
- ProSomnus® ACG Night Splint
- ProSomnus® ACG Night Splint (with Punch Out)
- ProSomnus® ACG BruxPad Splint

**Sleep and Snore Device Options**

- ProSomnus® [IA] ACG HERS Sleep and Snore Device  
Monogram™ Customization Options (for HERS only)
  - Anterior Discluder (2 mm default)
- ProSomnus® [IA] Sleep and Snore Device (Series A)  
Standard Design Includes: Lingualless Anterior Coverage; Dual 90 Degree Radius Posts; Full Posterior Coverage; Flat Plane Splint Design; ProSomnus [UA] Unlimited Advancement Arches  
Monogram™ Customization Options (for [IA] only)
  - Anterior Airway (2 mm default)
  - Anterior Discluder (4 mm default)
  - Metal-Free Hooks

**ProSomnus ACG System Preferences Include:**

- OK to adjust or close bite up to +/- 1 mm, call if >1 mm is needed
- Digital records OK; do not send back models
- Always reduce vertical up to 1 mm if possible
- Add lateral play for dual posts \_\_\_\_\_ mm
- Add reinforcement for dual posts \_\_\_\_\_ mm
- Add reinforcement for anterior:  Lingual  Facial  Both

**Supplies (OPTIONAL)**

- ProSomnus ACG System Rx
- Shipping Boxes/Supplies
- Shipping Airbills
- George Gauge Kit\* \_\_\_\_\_qty
- George Gauge Forks 2 mm (Set of 5)\*  
Size:  Small  Large \_\_\_\_\_qty
- George Gauge Forks 5 mm (Set of 5)\*  
Size:  Small  Large \_\_\_\_\_qty
- ProSomnus 3 mm GG Forks (Set of 5)\* \_\_\_\_\_qty

\*Additional fee applies.

**Special Instructions (OPTIONAL)**

---

---

---

---

---

---

---

---

5860 West Las Positas Blvd., Ste. 25  
Pleasanton, CA 94588  
r925 558 4003

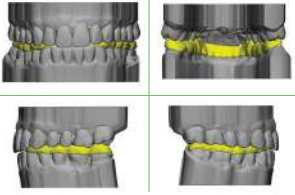
PROSOMNUS USE	
---------------	--

844 537 5337  
ProSomnus.com

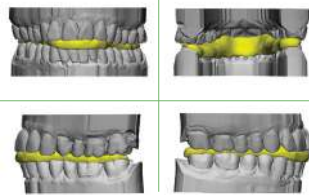


## ProSomnus® ACG Splints

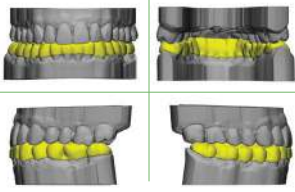
### ACG Day



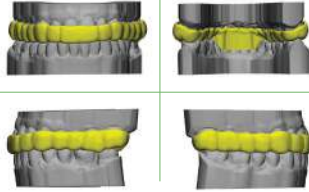
### ACG Day Full



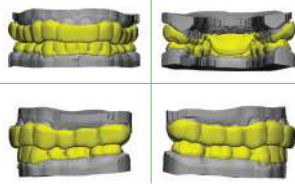
### ACG Functional



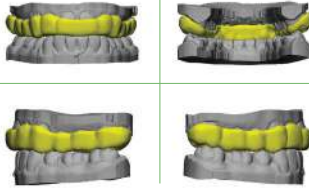
### ACG Night



### ACG Night with Punch Out

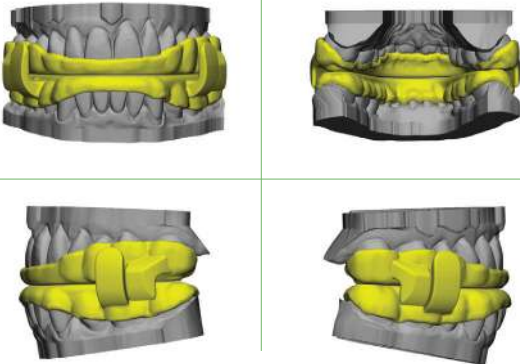


### ACG BruxPad

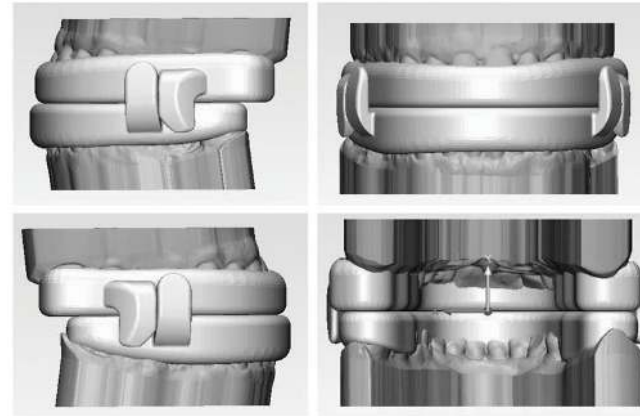


## ProSomnus® [IA] ACG HERS Sleep and Snore Device

### ACG HERS



## ProSomnus® [IA] Sleep and Snore Device



## ProSomnus® [IA] Series Advancement Guide

(ADVANCEMENTS NOT TO SCALE)

### SERIES A: Range = 3 mm

4 DEVICES U0, U2, L0, L1	COMBINATION	ADVANCEMENTS
	Upper 0 + Lower 0	0 mm
	Upper 0 + Lower 1	1 mm
	Upper 2 + Lower 0	2 mm
	Upper 2 + Lower 1	3 mm

## Monogram™ Customization Options

### ANTERIOR AIRWAY



### ANTERIOR DISCLUDER

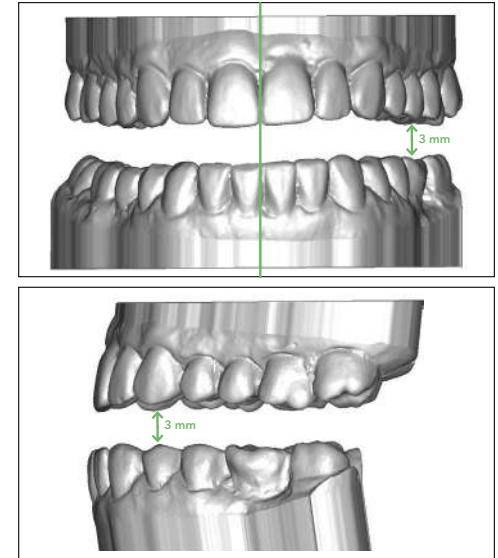


### METAL-FREE HOOKS



## ProSomnus® Device Bite Requirement

ProSomnus devices require 3 mm of interarch clearance. The diagram below shows how to visualize the amount of space required.



Doctors have been reported using several additional techniques when issues arise to make sure they have enough room:

- Moving the bite fork to include dangling cusps
- Modifying the bite fork to capture dangling cusps
- Adding material to the incisal guide area to open the vertical more
- Measuring with a caliper in the bicuspid and molar areas
- Shortening the device when there is an excessive Curve of Spee

The ProSomnus [IA] Sleep and Snore Device is an FDA cleared and registered medical device.

**DIGITAL IMPRESSION POLICY:** ProSomnus® Sleep Technologies receives digital impressions. For quality assurance purposes, sleep devices made from digital impressions are fit against a 3D printed model of the digital impression.

**WARRANTY:** ProSomnus 100% guarantees the workmanship and materials of this device. ProSomnus' service warranty can be found at <http://prosomnus.com/dentist-products/micro%E2%82%82-sleep-and-snore-device/terms-and-conditions/>

**DISCLAIMER:** ProSomnus cannot warrant against customer dissatisfaction due to diagnosis, treatment decisions, style, or brand of device chosen. We're happy to assist you with any device adjustments and/or modifications, and to provide you with any information you may need to learn about the use of these devices.

**OUR PROMISE TO YOU:** Upon incoming examination of your case, if the ProSomnus manufacturing team determines that there is not enough bite clearance, nor enough retention to accommodate the standard design, we will NOT make changes without your knowledge or authorization unless noted in your preferences. Our manufacturing processes will be temporarily stopped until we are able to contact you for a consultation regarding design alternatives that you prefer and prescribe.