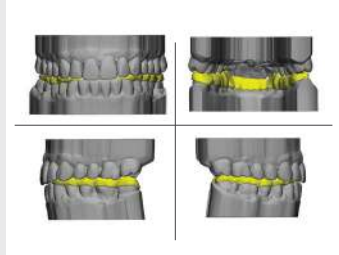




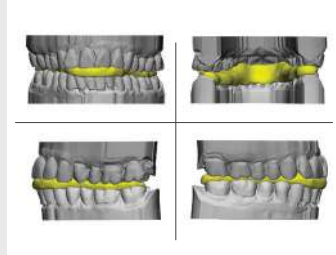
## ProSomnus ACG Splint Day/Night Splint Options

### DAY

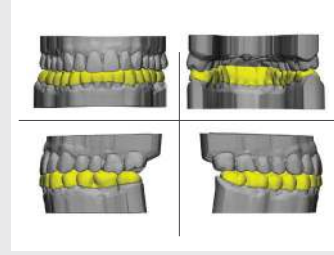
#### Standard



#### Full



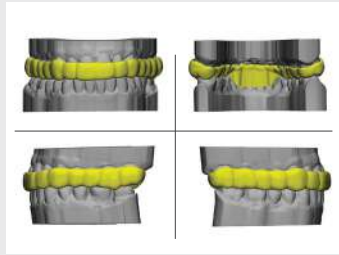
#### Functional



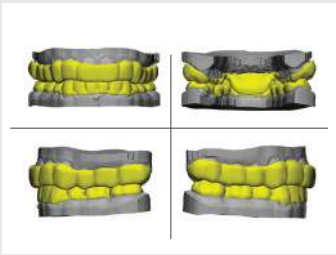
- **STANDARD:** A lower repositioning splint providing anterior guidance.
- **FULL:** Special variant for anterior open bite patients to help transfer the forces appropriately.
- **FUNCTIONAL:** A pre-restorative appliance that acclimates the patient to their new bite.

### NIGHT

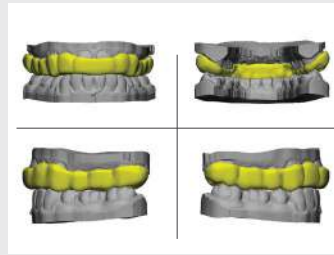
#### Standard



#### Stabilizer



#### BruxPad

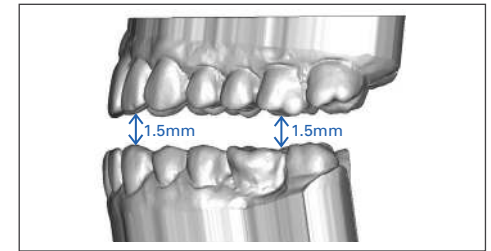
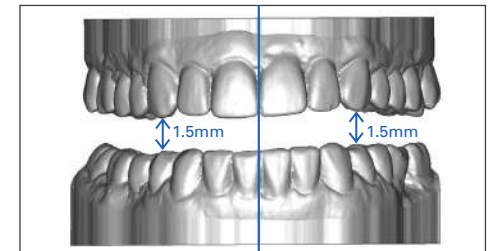


- **STANDARD:** Patients with TMD complaints prior to being treated with a MAD for OSA.
- **STABILIZER:** Patients with discomfort of the lower anterior teeth or localized mobility.
- **BRUXPAD:** Bruxism patients, this option features a broader anti-retrusion ramp than the Standard.

## ProSomnus Splint Bite Requirement

ProSomnus splints require 1.5mm of clearance at the lowest cusp point. The diagram below shows how to visualize the amount of space required.

**Note:** If ordering the Night Stabilizer splint, requirement is 3.0mm of clearance at the lowest cusp point.



Doctors have been reported using several additional techniques when issues arise to make sure they have enough clearance:

- Moving the bite fork to include dangling cusps.
- Modifying the bite fork to capture dangling cusps.
- Adding material to the incisal guide area to open the vertical more.
- Measuring with a caliper in the bicuspid and molar areas.
- Shortening the device when there is an excessive Curve of Spee.

## Policy Guidelines

**DIGITAL IMPRESSION POLICY:** ProSomnus® Sleep Technologies receives digital impressions. For quality assurance purposes, sleep devices made from digital impressions are fit against a 3D printed model of the digital impression. We strongly recommend if sending digital impressions to also send a digital bite, rather than physical to avoid manufacturing delays. If sending a physical bite with digital impressions, please notify [Digital@ProSomnus.com](mailto:Digital@ProSomnus.com) or notate when submitting files.

**WARRANTY:** ProSomnus 100% guarantees the workmanship and materials of this device. ProSomnus' service warranty can be found at [ProSomnus.com](http://ProSomnus.com) (Terms and Conditions section).

**DISCLAIMER:** ProSomnus cannot warrant against customer dissatisfaction due to diagnosis, treatment decisions, style, or brand of device chosen. We're happy to assist you with any device adjustments and/or modifications, and to provide you with any information you may need to learn about the use of these devices.

**OUR PROMISE TO YOU:** Upon incoming examination of your case, if the ProSomnus manufacturing team determines that there is not enough bite clearance, nor enough retention to accommodate the standard design, we will NOT make changes without your knowledge or authorization unless noted in your preferences. Our manufacturing process will be temporarily stopped until we are able to contact you for a consultation regarding design alternatives that you prefer and prescribe.